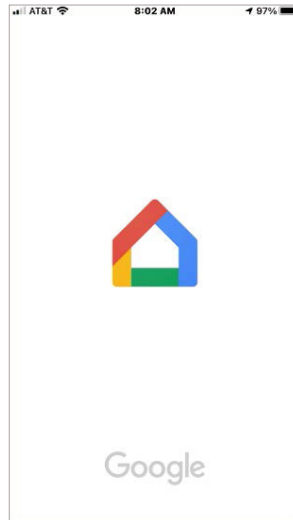


Detailed Instructions for Google Home

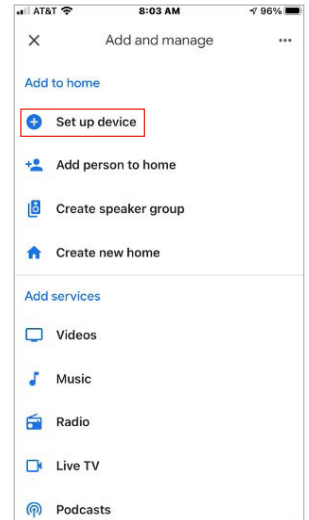
1. Download the Google/Nest Home app to your phone or tablet from the IOS app store or Google play store.
2. Create an account with Google/Nest and setup your google home device (home, mini, max, etc.) to get started.
3. Once your account is created re-start the app.



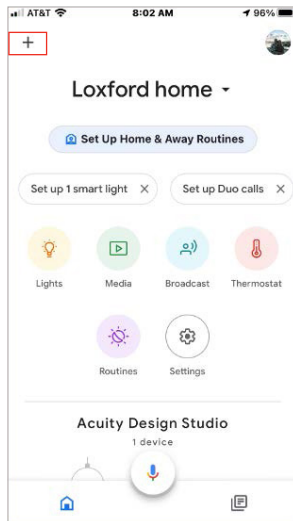
4. Turn your Wafer off and wait three seconds before turning it on again.



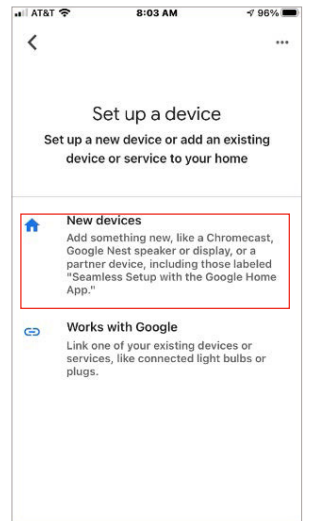
6. Select "Set up device" to add a new device.



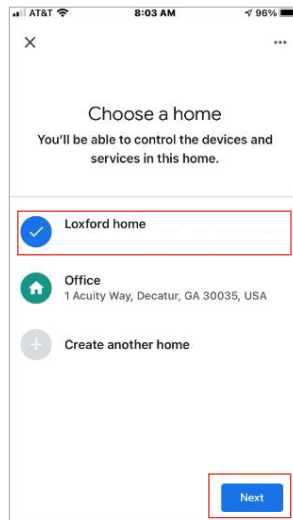
5. From the main window select the "+" at the top left corner to add a new device.



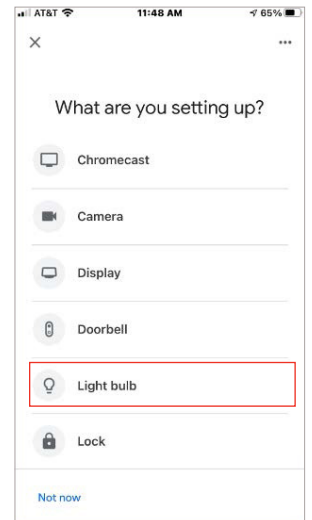
7. Select "New devices" to add the Wafer.



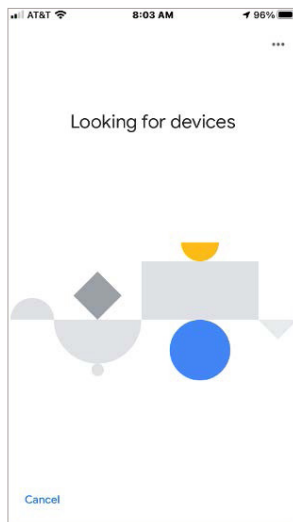
8. Select the home associated with the Wafer. Next, click on "Next".



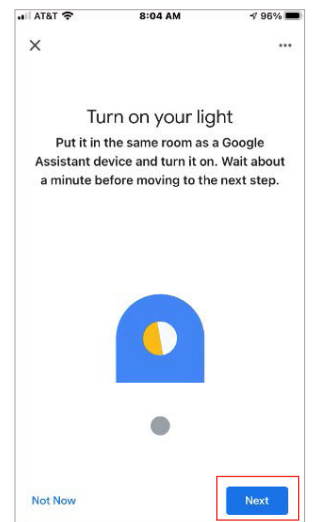
11. Click on "Light Bulb" to set up the Wafer.



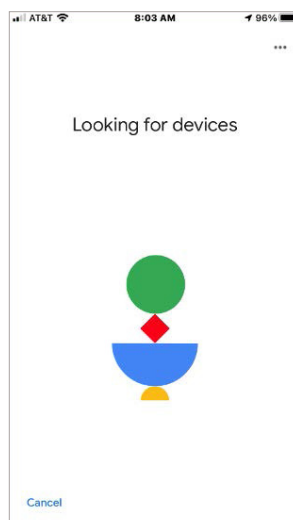
9. Google Home will do internal setup with your Google Home Device.



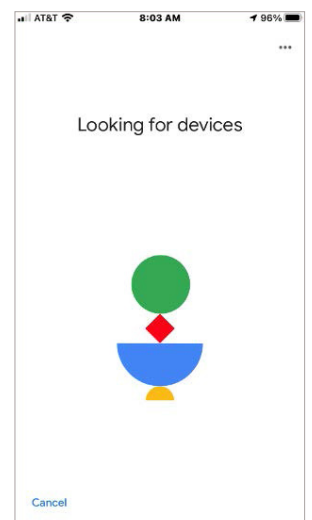
12. If your Wafer was off, turn it on now. Wait a minute before moving to the next step. NOTE: if your Wafer was already on this step might be skipped by the app.



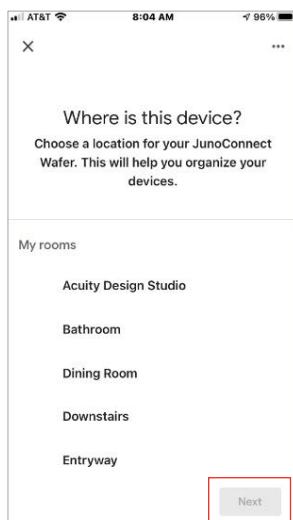
10. Once Google Home completes the process it will indicate success.



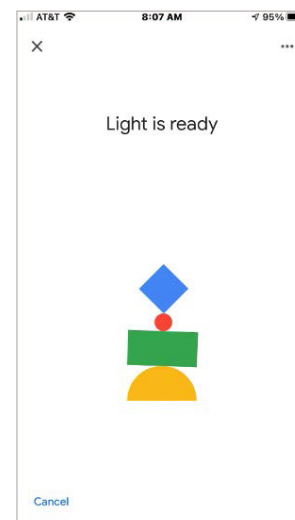
13. The Google Home device will now establish a connection with the Wafer.



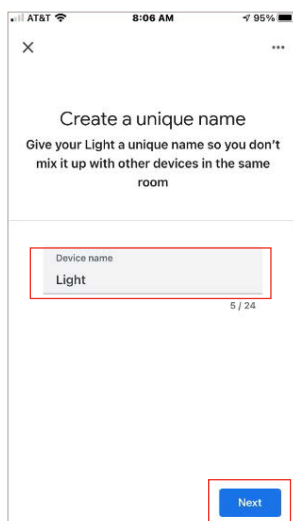
14. Next select a room where you are installing the Wafer and click "Next".



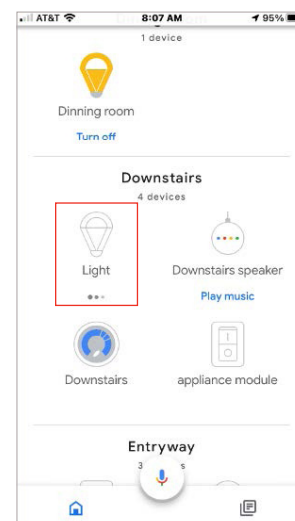
17. Once the final setup is complete Google Home will display "Light is ready".



15. Next, give the Wafer a unique name and press next.



18. Your Wafer will now appear in your front page. Click on it to control it.



16. Google Home will now complete the setup of the Wafer.

