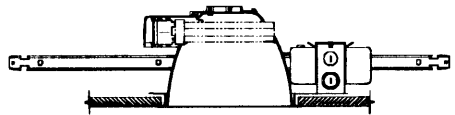
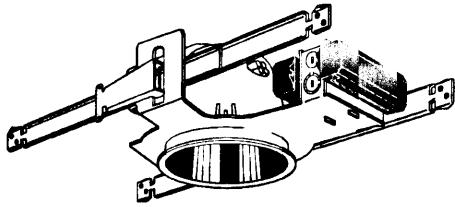


INSTALLATION INSTRUCTIONS

IGRSE™

GOTHAM ROUGH-IN SECTION FLOURESCENT

Upon receipt, thoroughly inspect for any freight damage which should be brought to the attention of the delivery carrier. Compare the catalog description listed on the packing slip with the label on the carton to ensure you have received the correct merchandise.



IMPORTANT SAFETY INFORMATION

(For Your Protection, Read Carefully)

WARNING - RISK OF FIRE. DO NOT INSTALL INSULATION WITHIN 3 INCHES OF FIXTURE SIDES OR WIRING COMPARTMENT, NOR ABOVE FIXTURE IN SUCH A MANNER AS TO ENTRAP HEAT.

1. Electric current can cause painful shock or serious injury unless handled properly. For your safety, always remember the following:
 - Turn off the power supply.
 - Ground the fixture to avoid potential electrical shocks.
 - Do not handle an energized fixture or energize any fixture with wet hands, when standing on a wet or damp surface, or in water.
 - Double check all electrical connections to be sure they are tight and correct.
2. Specific safety information concerning lamps:
 - Match wattage of fixture and lamp exactly.
 - Do not remove or insert lamp when power is on.
 - Do not scratch glass or subject lamp to undue pressure as either may cause lamp breakage.
 - Protect operating lamp from sources of moisture.

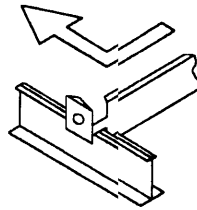


Fig. 1

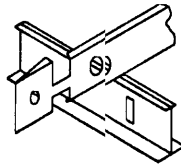


Fig. 2

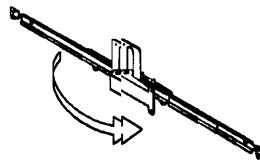


Fig. 3



Fig. 4

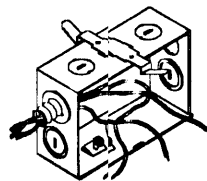


Fig. 5

PRIOR TO INSTALLATION

Make certain that:

1. Ceiling opening is properly sized to accept mounting frame.
2. Ceiling structure is properly constructed and supported.
3. All supply leads meet applicable code.

NEW INSTALLATION

1. Position the rough-in section, adjust the telescoping channel bars horizontally, and secure to the ceiling structure. Rough-in may be secured by wire, screws or by bending channel end tabs to clamp onto T-bar runners on suspended ceilings. (See Fig. 1)

NOTE: When using 1" high T-bar place channel bar across top of T-bar and secure with wire or other appropriate means. (See Fig.2) This will prevent the mounting frame from protruding below the ceiling tile.

2. Channel bars are secured by clamping mechanism. If additional security is required, an 8 - 18 sheet metal screw may be driven through the aligned holes in the clamping mechanism. (See Fig. 3)
3. Cut appropriate ceiling opening based on the mounting frame size. Position mounting frame in ceiling opening to align the edge of the frame flush or slightly above 1/8" (max) ceiling line. (See Fig.4)
4. Remove knockouts to feed power supply to fixture. Supply wire must meet local code and be rated a minimum of 75°C. Junction box is thru-wire rated for 8 - No. 12 conductors (4 in - 4 out). (See Fig. 5)
5. Ballast are secured to a junction box door. Simply snap the door and ballast onto the junction box. If a ballast is desired on the opposite side of the junction box, pass the entire door and ballast assembly through the junction box and snap into place.

NOTE: AF, AFW, AND LGF TRIM INSTALLATION ON NEXT PAGE

TROUBLE SHOOTING CHART

Check first for any visible damage to the lamp or frame-in module. If they seem in good condition, locate the problem in the following list for possible cause and corrective action.

POSSIBLE CAUSE	CORRECTIVE ACTION
LAMP FAILS TO LIGHT <ul style="list-style-type: none"> • Circuit feeding the fixture not energized • Wiring error in circuit or module connection • Faulty lamp 	<ul style="list-style-type: none"> • Check circuit breaker or fuse to insure that circuit is energized. • Examine fixture splice box to see that connections are proper. • Remove the faulty lamp and substitute another lamp, preferably one that is known to light. If the lamp lights, replace the original with a new one.
LAMP GOES OUT AFTER LIGHTING <ul style="list-style-type: none"> • Faulty lamp 	<ul style="list-style-type: none"> • Occasionally a lamp will exhibit this symptom rather than simply failing to light. Substitute a new lamp.
LAMP CYCLES ON AND OFF <ul style="list-style-type: none"> • Insulation is too close to fixture • Lamp wattage too high 	<ul style="list-style-type: none"> • Remove insulation from around module (at least 3"). • Install lamp wattage specified in housing.

TRIM INSTALLATION INSTRUCTIONS

HORIZONTAL FLUORESCENT LAMPS

AF SERIES TRIM INSTALLATION

1. Secure trim to die-cast socket housing by inserting corners of housing into raised tabs on reflector and aligning screw in keyhole slot. Push socket housing forward and secure assembly by tightening retaining screw. (See Fig. 6)
2. Insert trim assembly into mounting frame by tilting assembly and rocking trim assembly through aperture. Push upward until trim is flush white with ceiling. (See Fig. 7)
NOTE: For best results position die-cast socket housing opposite ballast.
NOTE: AFW trim installation requires the removal of the, three (3) prong holding clip on side the opposite of the wall.
3. Install lamp in fixture by inserting the tip of the lamp through the reflector hole opposite the socket. Then align lamp base with socket and snap into position. (See Fig. 8)

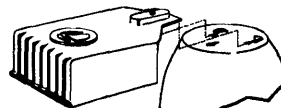


Fig. 6

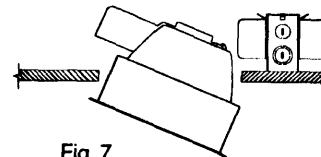


Fig. 7

AFW SERIES (WALL WASH) TRIM INSTALLATION

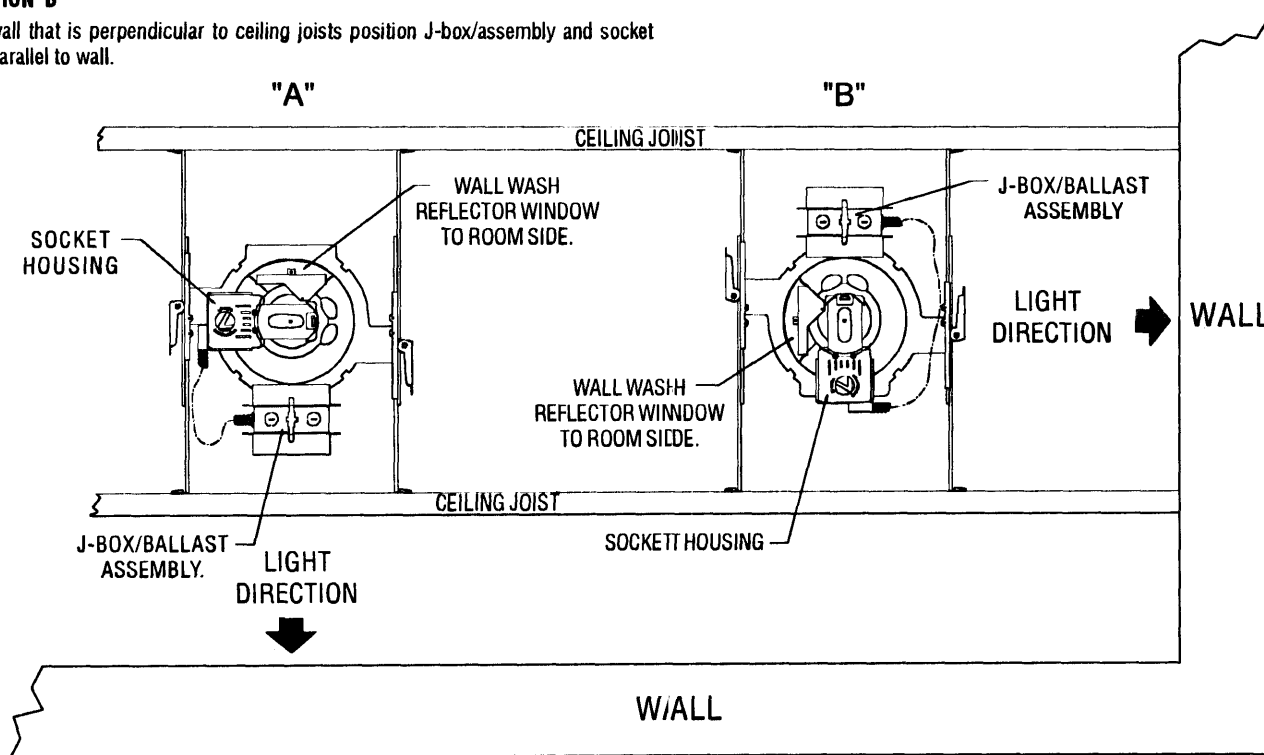
ORIENTATION "A"

To light wall that is parallel to ceiling joists, position J-box/ballast assembly toward wall.

ORIENTATION "B"

To light wall that is perpendicular to ceiling joists position J-box/assembly and socket housing parallel to wall.

Note: To insure proper reflector alignment, fixture housings must be installed in the orientation when used with AFW reflectors.



LGF SERIES TRIM INSTALLATION

1. Remove door and lens from spun aluminum reflector trim; secure trim to die-cast socket housing by inserting corners of housing into raised tabs on reflector and aligning screw in keyhole slot. Push socket housing forward and secure assembly by tightening retaining screw (See Fig. 6).
2. Slide both trim mounting brackets under lined up tabs located on mounting frame as shown (See Fig. 9). Holes are provided to permanently attach bracket (optional).
3. Insert die-cast socket housing and trim assembly in mounting frame by tilting and rocking assembly through aperture. Then push the trim assembly straight into the mounting frame and align keyhole slots onto screws secured to mounting frame brackets. Tighten mounting screws to secure reflector assembly to mounting frame (See Fig. 7) **NOTE: For best results position die-cast socket housing opposite ballast.**
4. Install lamp in fixture by inserting the tip of the lamp through the reflector hole opposite the socket, then align lamp base with socket and snap into position (See Fig. 8).
5. Assemble the door and lens assembly by compressing the butterfly springs and positioning them through the keyholes and slots in the reflector. As the door is guided into the reflector with a slight upward motion the butterfly springs will snap door into position.

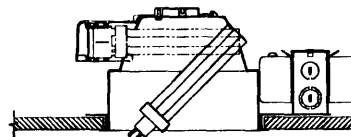


Fig. 8

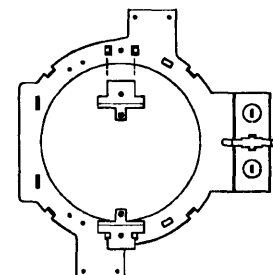


Fig. 9