



Gotham Architectural Downlighting
Renovation Compact Fluorescent Downlights/Wallwash

6" AFI/AFWI
Open/Wallwash

Horizontal DTT or TRT Lamp

FEATURES

OPTICAL SYSTEM

- Reflector: Self-flanged, semi-specular or matte-diffuse reflector. Fluted vertical upper section works in conjunction with Patented Bounding Ray™ Optical Principle design (U.S. Patent No. 5,800,050) to provide lamp before lamp image and smooth transition from top of reflector to bottom. Minimum flange matches reflector finish.
- Baffle/cone: Semi-specular clear upper reflector. Baffle with specular black cone and flange that matches cone finish.
- Hinged lampdoor provided for optimal fixture efficiency and the reduction of stray light in the plenum.
- Wallwash: Highly reflective outer kicker reflector provides smooth, uniform illumination floor to ceiling, edge to edge. Inner cone is contoured to eliminate room side flash. For optimal uniformity, the recommended luminaire spacing is 0.9m (3') from the wall and 0.9m (3') centers.

MECHANICAL SYSTEM

- Pre-wired galvanized steel junction box mounted to reflector is provided with removable access cover. Knockouts provided for power supply feed and conduit

runs. No. 12 AWG conductors, rated for 90°C

- Three (3) swinggate brackets allow for installation from below the ceiling. Suitable for ceiling thickness ranging from 5/8" (1.59cm) to 1" (2.54cm).

ELECTRICAL SYSTEM

- Horizontally-mounted, positive-latch, thermoplastic socket.
- Thermally protected, high power factor electronic ballast (50/60Hz) mounted to the junction box.

LISTING

- Fixtures are UL Listed for thru-branch wiring, non-IC recessed mounting and damp locations.

WARRANTY

- 1-year limited warranty. Complete warranty terms located at www.acuitybrands.com/CustomerResources/Terms_and_conditions.aspx

ORDERING INFORMATION

EXAMPLE: AFI 1/26TRT 6AR MVOLT

Series	Wattage/Lamp	Aperture/Trim color	Finish	Voltage	Ballast	Options
AFI	1/13DTT	6AR Clear	(blank) Semi-specular	MVOLT ³	(blank) Electronic ballast	GMF ⁴ Single, slow-blow fuse
AFWI	1/18DTT	6PR Pewter	LD Matte-diffuse	120	ECOS Lutron® EcoSystem® electronic dimming ballast. Minimum dimming level 5%.	GLR ⁴ Single, fast-blow fuse
	1/26DTT	6WTR Wheat		277	ADEZ ⁴ Advance Mark 10® electronic dimming ballast. Minimum dimming level 5%	GSKT Foam gasketing, ships uninstalled
	1/13TRT	6CB ¹ Cross baffle				TRW White painted flange
	1/18TRT	6BC ^{1,2} Black cone				TRBL Black painted flange
	1/26TRT	6WR ^{1,2} White painted				WLP With 3500 K lamp (shipped separately)
	1/32TRT					
	1/42TRT					

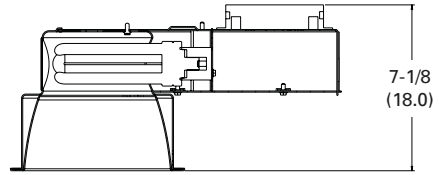
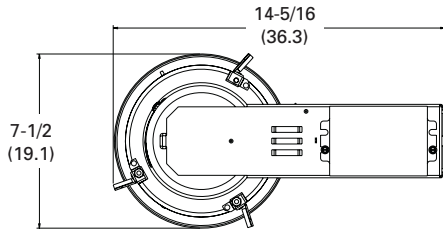
NOTES

ORDERING NOTES

1. AFI only
2. Not available with finishes.
3. Multi-volt electronic ballast capable of operating on any line voltage from 120V through 277V, 50 or 60 Hz.
4. Available in 120V or 277V only.

DIMENSIONAL DATA

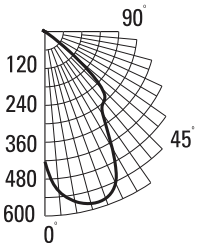
All dimensions are inches (centimeters) unless otherwise noted.



- Aperture: 6-1/4 (15.9)
- Ceiling Opening: 6-7/8 (17.5)
- Overlap Trim: 7-1/2 (19.1)

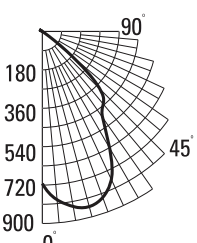
Distribution Curve Distribution Data Output Data Coefficient of Utilization Illuminance: Single Luminaire 30" Above Floor

AFI 1/18TRT 6AR (1) CF18DT/E/IN/835, 1200 LUMENS PER LAMP, 1.3 S/MH, TEST NO. LTL9404



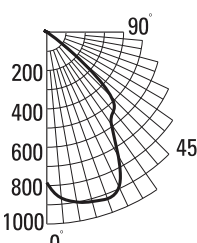
From 0°	cp.	Lumens	Zone	Lumens	%lamp	ρf ρc ρw	80%		20%		50%		Mount height	Initial fc at beam center	50% beam angle 60.9°		10% beam angle 94.1°	
							50%	30%	50%	30%	50%	30%			Beam diameter	fc at beam edge	Beam diameter	fc at beam edge
0°	423		0°-30°	351.8	29.3	1	63	62	62	61	60	59	8'	14.0	6.5	7.0	11.8	1.4
5°	522	41	0°-40°	526.7	43.9	2	58	56	57	55	55	53	10'	7.5	8.8	3.8	16.1	0.8
15°	579	123	0°-60°	693.5	57.8	3	53	50	53	49	51	48	12'	4.7	11.2	2.3	20.4	0.5
25°	543	187	0°-90°	695.4	58.0	4	49	45	48	45	47	44	14'	3.2	13.5	1.6	24.7	0.3
35°	328	175	90°-180°	0.0	0.0	5	45	41	44	41	43	40	16'	2.3	15.9	1.2	29.0	0.2
45°	263	150	0°-180°	695.4	58.0*	6	42	38	41	37	40	37						
55°	12	17				7	38	34	38	34	37	34						
65°	1	1				8	36	32	35	31	35	31						
75°	1	1				9	33	29	33	29	32	29						
85°	0	0				10	31	27	31	27	30	27						
90°	0	0																

AFI 1/26TRT 6AR (1) CF26DT/E/IN/835, 1800 LUMENS PER LAMP, 1.2 S/MH, TEST NO. LTL9391



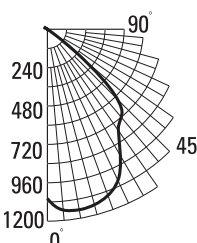
From 0°	cp.	Lumens	Zone	Lumens	%lamp	ρf ρc ρw	80%		20%		50%		Mount height	Initial fc at beam center	50% beam angle 59.9°		10% beam angle 93.8°	
							50%	30%	50%	30%	50%	30%			Beam diameter	fc at beam edge	Beam diameter	fc at beam edge
0°	713		0°-30°	584.2	32.5	1	69	67	67	66	65	64	8'	23.6	6.3	11.8	11.8	2.4
5°	792	72	0°-40°	866.2	48.1	2	63	60	62	59	60	58	10'	12.7	8.6	6.3	16.0	1.3
15°	850	206	0°-60°	1125.1	62.5	3	58	54	57	54	55	52	12'	7.9	11.0	4.0	20.3	0.8
25°	765	307	0°-90°	1127.4	62.6	4	53	49	52	49	51	48	14'	5.4	13.3	2.7	24.6	0.5
35°	493	282	90°-180°	0.0	0.0	5	49	45	48	44	47	44	16'	3.9	15.6	2.0	28.8	0.4
45°	383	232	0°-180°	1127.4	62.6*	6	45	41	45	41	44	40						
55°	15	27				7	42	37	41	37	40	37						
65°	1	2				8	39	34	38	34	38	34						
75°	0	1				9	36	32	36	32	35	31						
85°	0	0				10	34	30	33	29	33	29						
90°	0	0																

AFI 1/32TRT 6AR (1) CF32DT/E/IN/835, 2400 LUMENS PER LAMP, 1.3 S/MH, TEST NO. LTL9390



From 0°	cp.	Lumens	Zone	Lumens	%lamp	ρf ρc ρw	80%		20%		50%		Mount height	Initial fc at beam center	50% beam angle 62.0°		10% beam angle 94.1°	
							50%	30%	50%	30%	50%	30%			Beam diameter	fc at beam edge	Beam diameter	fc at beam edge
0°	784		0°-30°	663.0	27.6	1	60	58	58	57	56	55	8'	25.9	6.6	13.0	11.8	2.6
5°	868	79	0°-40°	995.2	41.5	2	55	52	54	51	52	50	10'	13.9	9.0	7.0	16.1	1.4
15°	914	230	0°-60°	1299.6	54.2	3	50	47	49	46	48	45	12'	8.7	11.4	4.3	20.4	0.9
25°	890	354	0°-90°	1304.8	54.4	4	46	43	45	42	44	41	14'	5.9	13.8	3.0	24.7	0.6
35°	587	332	90°-180°	0.0	0.0	5	42	39	42	38	41	38	16'	4.3	16.2	2.2	29.0	0.4
45°	473	273	0°-180°	1304.8	54.4*	6	39	35	39	35	38	35						
55°	22	31				7	36	32	36	32	35	32						
65°	2	3				8	33	30	33	29	32	29						
75°	1	2				9	31	27	31	27	30	27						
85°	1	1				10	29	25	29	25	28	25						
90°	0	0																

AFI 1/42TRT 6AR (1) CF42DT/E/IN/835, 3200 LUMENS PER LAMP, 1.3 S/MH, TEST NO. LTL9521



From 0°	cp.	Lumens	Zone	Lumens	%lamp	ρf ρc ρw	80%		20%		50%		Mount height	Initial fc at beam center	50% beam angle 62.5°		10% beam angle 94.2°	
							50%	30%	50%	30%	50%	30%			Beam diameter	fc at beam edge	Beam diameter	fc at beam edge
0°	1058		0°-30°	916.8	28.6	1	62	60	61	59	58	57	8'	35.0	6.7	17.5	11.8	3.5
5°	1135	107	0°-40°	1390.1	43.4	2	57	54	56	53	54	52	10'	18.8	9.1	9.4	16.1	1.9
15°	1136	323	0°-60°	1805.1	56.4	3	52	49	51	48	50	47	12'	11.7	11.5	5.9	20.4	1.2
25°	1043	487	0°-90°	1808.4	56.5	4	48	44	47	44	46	43	14'	8.0	14.0	4.0	24.7	0.8
35°	774	473	90°-180°	0.0	0.0	5	44	40	43	40	42	39	16'	5.8	16.4	2.9	29.0	0.6
45°	622	374	0°-180°	1808.4	56.5*	6	41	37	40	36	39	36						
55°	26	41				7	38	34	37	33	36	33						
65°	2	2				8	35	31	34	31	34	30						
75°	1	1				9	32	28	32	28	31	28						
85°	0	0				10	30	26	30	26	29	26						
90°	0	0																

PHOTOMETRY NOTES

- Tested to current IES and NEMA standards under stabilized laboratory conditions.
- Actual performance may differ as a result of end-user environment and application.
- Consult factory or IES file for microgroove baffle, black cone or other photometric reports.