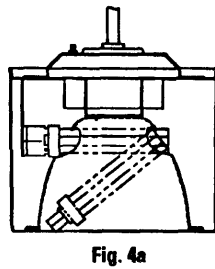
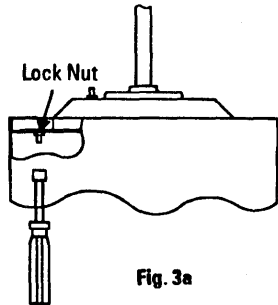
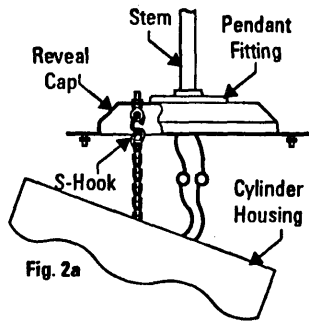
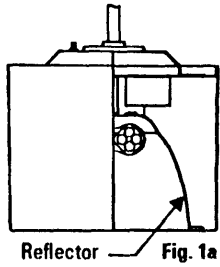


### Before getting started:

1. Not recommended for outdoor use or where cylinder will be subjected to adverse environmental conditions unless pendant is rigidly mounted.
2. Tool requirements: Straight blade screwdriver, 1/4" nutdriver, and pliers.



## INSTALLATION INSTRUCTIONS FOR PENDANT MOUNTED GOTHAM COMPACT FLUORESCENT CYLINDER

1. Feed branch circuit leads through pendant stem.
2. Mount 3/8" pendant stem (may be supplied as separate catalog item) to structure.
3. Twist reveal cap counter-clockwise and remove from top of cylinder housing.
4. Place 1 branch circuit leads through fitting mounted on top of reveal cap and attach reveal cap to pendant stem being careful to align threads correctly.
5. Remove reflector from cylinder housing.
  - For non-lensed units, loosen screw in top of reflector.
  - For lensed units, pull door assembly straight out of reflector, compress retaining springs and disengage from reflector and loosen screw in top of reflector.
6. Hang cylinder housing from reveal cap by attaching S-hook to eyelet as shown in Fig. 2a. Use pliers and crimp S-hook onto eyelet. This will now allow for handsfree connections to supply leads.
7. Make supply connections. Supply wire must meet local or national codes and be rated for a minimum of 75°C. Push completed supply connections back through hole in reveal cap.

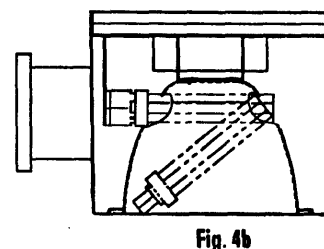
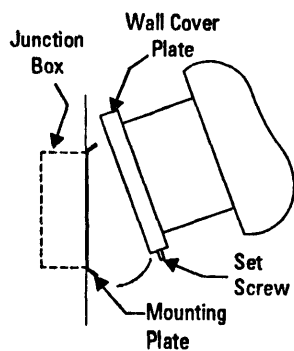
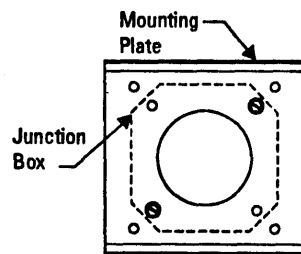
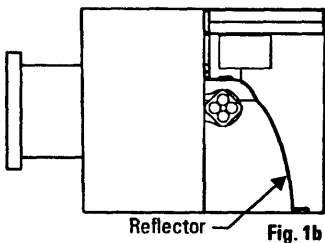
**Grounding Note:** The fixture must be provided with a proper grounding conductor.

**Warning:** Check to be sure that the proper voltage has been supplied to the fixture. Improper wiring may result in electrical failure and void all warranties.

8. Mount cylinder to reveal cap by passing lock nuts on reveal cap through key ways in cylinder top and twisting housing counter-clockwise so that the lock nuts move into the locked position of the key ways as shown in Fig. 3a, being careful not to entrap wires between reveal cap and cylinder housing.
9. Access and tighten lock nuts inside cylinder housing.
10. Place reflector into cylinder housing, align center hole and slot in top of reflector with hole and stud on mounting bracket and tighten screw in top of reflector.
11. Fixture is now ready to be lamped. See Fig. 4a for proper installation of lamps. Refer to label located on reflector for proper lamp type and wattage.
12. For lensed units, compress retaining springs on door assembly and align with slots in reflector. Guide door assembly into reflector and retaining springs will snap door into place.
13. If necessary, clean reflector with a non-abrasive cleaner to remove dirt, fingerprints, etc. It is recommended that reflector (and glass if applicable) be cleaned periodically to retain optimum photometric performance.

### Before getting started:

1. Housing is equipped to be mounted directly to a 4" square or 4" octagonal junction box which must be installed with respect to the floor line.
2. Tool requirement: Straight blade screwdriver, 1/4" nutdriver and 5/64" allen wrench.



## INSTALLATION INSTRUCTIONS FOR WALL MOUNTED GOTHAM COMPACT FLUORESCENT CYLINDER

1. Loosen set screw in bottom of wall cover plate and remove mounting plate.
2. Place branch circuit leads through hole in mounting plate, aligning correct hole patterns between mounting plate and junction box and use screws supplied with junction box to securely attach mounting plate as shown in Fig. 2b.
3. Attach cylinder housing by hooking wall cover plate over top section of mounting plate as shown in Fig. 3b.
4. Make supply connections inside of cylinder housing. Supply wire must meet local or national codes and be rated for a minimum of 75°C.

**(Grounding Note):** The fixture must be provided with a proper grounding conductor.

**Warning:** Check to be sure that the proper voltage has been supplied to the fixture. Improper wiring may result in electrical failure and void all warranties.

5. Secure cylinder housing to mounting plate by tightening set screw in bottom of wall cover plate.
6. For lensed units, pull door assembly straight out of reflector, compress retaining springs and disengage from reflector and loosen screw in top of reflector.
7. Fixture is now ready to be lamped. See Fig. 4b for proper installation of lamps. Refer to label located on reflector for proper lamp type and wattage.
8. For lensed units, compress retaining springs on door assembly and align with slots in reflector. Guide door assembly into reflector and retaining springs will snap door into place.
9. If necessary, clean reflector with a non-abrasive cleaner to remove dirt, fingerprints, etc. It is recommended that reflector (and glass if applicable) be cleaned periodically to retain optimum photometric performance.