



Gotham Architectural Downlighting  
Renovation Compact Fluorescent Downlights

**6" LGFI**  
**Round Lens**

Wet Location  
Horizontal DTT or TRT Lamp

FEATURES

**OPTICAL SYSTEM**

- Aluminum upper reflector coated with highly reflective white paint provides high efficiency and an evenly illuminated aperture appearance.
- Available with tempered prismatic lens (T73), flat fresnel lens (FFL) or flat opal lens (FOL).
- Regressed white door (RW) or stepped black baffle (SB) are available with white painted flange provided.
- Door is retained by self-aligning, torsion support springs, preventing gaps between door and ceiling.

**MECHANICAL SYSTEM**

- Pre-wired galvanized steel junction box mounted to reflector is provided with removable access cover. No. 12 AWG conductors rated for 90°C.
- Three (3) swinggate brackets allow for installation from below the ceiling. Suitable for ceiling thickness ranging from 5/8" (1.59cm) to 1" (2.54cm).

**ELECTRICAL SYSTEM**

- Galvanized steel lampholder housing.
- Horizontally-mounted, four-pin, positive-latch, thermoplastic socket.

- Thermally protected, high-power-factor electronic ballast (50/60Hz) mounted to the junction box.

**LISTING**

- Fixtures are UL Listed, non-IC recessed mounting and wet locations. Listed and labeled to comply with Canadian standards.

**WARRANTY**

- 1-year limited warranty. Complete warranty terms located at: [www.acuitybrands.com/CustomerResources/Terms\\_and\\_conditions.aspx](http://www.acuitybrands.com/CustomerResources/Terms_and_conditions.aspx)

ORDERING INFORMATION

**EXAMPLE: LGFI 1/26TRT 6RW T73 MVOLT**

Series	Wattage/Lamp	Aperture/Trim color	Lens type	Voltage	Ballast	Options	
LGFI	1/13DTT	6RW	T73 Tempered prismatic lens FFL Flat fresnel lens FOL Flat opal lens PPC Prismatic polycarbonate lens	MVOLT <sup>1</sup> 120 277	(blank) Electronic ballast ECOS Lutron EcoSystem® electronic dimming ballast. Minimum dimming level 5%. ADEZ <sup>2</sup> Advance Mark 10® electronic dimming ballast. Minimum dimming level 5%	GMF <sup>2</sup> Single, slow-blow fuse GLR <sup>2</sup> Single, fast-blow fuse GSKT Foam gasketing TRW White painted flange TRBL Black painted flange TRDA Tamper-resistant door assembly WLP With 3500 K lamp (shipped separately)	
	1/18DTT						Regressed white door
	1/26DTT	6SB					Stepped black baffle
	1/13TRT	6RA					Regressed anodized
	1/18TRT						
	1/26TRT						
	1/32TRT						
	1/42TRT						

NOTES

ORDERING NOTES
1. Multi-volt electronic ballast capable of operating on any line voltage from 120V through 277V, 50 or 60 Hz.
2. Available in 120V or 277V only.

**6" LGFI**

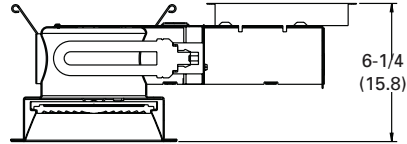
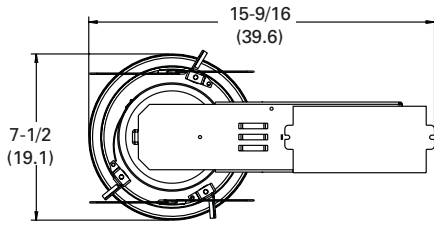
**Round Lens**

Wet Location, Horizontal DTT or TRT Lamp



DIMENSIONAL DATA

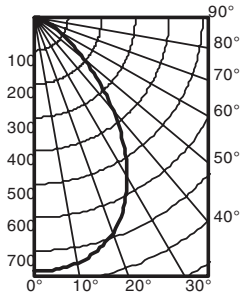
All dimensions are inches (centimeters) unless otherwise noted.



- Aperture: 6-1/4 (15.9)
- Ceiling Opening: 6-5/8 (16.8)
- Overlap Trim: 7-1/2 (19.1)

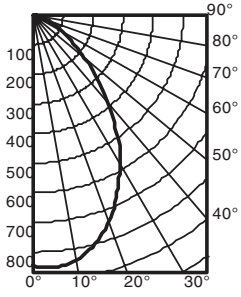
Distribution Curve    Distribution Data    Output Data    Coefficient of Utilization    Illuminance: Single Luminaire 30" Above Floor

**LGFI 1/32TRT 6RW T73**    32TRT LAMP, 1.1 S/MH, 2400 RATED LUMENS, TEST NO. LTL14212



From 0°	Ave	Lumens	Zone	Lumens	% Lamp	pf	20%						50% beam angle							
0°			0° - 30°			pc	80%		70%		50%		57.9°		10% beam angle					
							pw	50%	30%	50%	30%	50%	30%	Initial fc	fc at	fc at				
0	760		0° - 30°	562.1	23.4	1	.57	.55	.56	.54	.54	.52		Mount at beam	beam	beam				
5	758	72	0° - 40°	848.1	35.3	2	.52	.49	.51	.48	.49	.47	height center	diameter	beam edge	Beam diameter	beam edge			
15	724	203	0° - 60°	1176.6	49.0	3	.47	.43	.46	.43	.44	.42	8	25.1	6.1	12.6	11.7	2.5		
25	627	287	0° - 90°	1271.4	53.0	4	.42	.39	.42	.38	.40	.37	10	13.5	8.3	6.8	16.0	1.4		
35	460	286	90° - 180°	0.0	0.0	5	.39	.35	.38	.34	.37	.34	12	8.4	10.5	4.2	20.3	0.8		
45	270	209	0° - 180°	1271.4	*53.0	6	.35	.31	.35	.31	.34	.31	14	5.7	12.7	2.9	24.6	0.6		
55	130	119													16	4.2	14.9	2.1	28.8	0.4
65	62	62																		
75	23	26																		
85	6	6																		
90	0																			

**LGFI 1/32TRT 6RW FFL**    32TRT LAMP, 1.1 S/MH, 2400 RATED LUMENS, TEST NO. LTL14213



From 0°	Ave	Lumens	Zone	Lumens	% Lamp	pf	20%						50% beam angle							
0°			0° - 30°			pc	80%		70%		50%		55.8°		10% beam angle					
							pw	50%	30%	50%	30%	50%	30%	Initial fc	fc at	fc at				
0	848		0° - 30°	608.8	25.4	1	.63	.61	.62	.60	.59	.58		Mount at beam	beam	beam				
5	855	81	0° - 40°	911.3	38.0	2	.57	.54	.56	.53	.54	.51	height center	diameter	beam edge	Beam diameter	beam edge			
15	800	224	0° - 60°	1288.2	53.7	3	.51	.47	.50	.47	.49	.46	8	28.0	5.8	14.0	11.8	2.8		
25	661	304	0° - 90°	1410.0	58.7	4	.47	.42	.46	.42	.44	.41	10	15.1	7.9	7.5	16.1	1.5		
35	487	303	90° - 180°	0.0	0.0	5	.42	.38	.42	.38	.41	.37	12	9.4	10.1	4.7	20.4	0.9		
45	296	229	0° - 180°	1410.0	*58.7	6	.39	.34	.38	.34	.37	.34	14	6.4	12.2	3.2	24.7	0.6		
55	163	148													16	4.7	14.3	2.3	28.9	0.5
65	82	82																		
75	30	33																		
85	7	8																		
90	0																			

PHOTOMETRY NOTES

- Tested to current IES and NEMA standards under stabilized laboratory conditions.
- Actual performance may differ as a result of end-user environment and application.
- Consult factory or IES file for microgroove baffle, black cone or other photometric reports.