



Gotham Architectural Downlighting
Renovation Decorative Compact Fluorescent Downlights

6" PDXFI
Ice™ Blade

Horizontal Lamp, Triple-Tube

FEATURES

OPTICAL SYSTEM

- Reflector - Self-flanged, matte-finished clear anodized reflector. Fluted vertical upper section works in conjunction with patented Bounding Ray™ Optical Principle design (U.S. Patent No. 5,800,050) to provide lamp before lamp image and smooth transition from top of reflector to bottom. Minimum flange matches reflector finish. White painted flange optional.
- Cross Baffle - Clear acrylic cross baffle with surface that provides a decorative edge-glow appearance.
- Hinged lampdoor provided for optimal fixture efficiency and the reduction of stray light in the plenum.

MECHANICAL

- Pre-wired galvanized steel junction box mounted to reflector provided with removable access cover. No. 12 AWG conductors rated for 90°C.
- Three (3) swinggate brackets allow for installation from below the ceiling. Suitable for ceiling thickness ranging from 5/8" (1.59cm) to 1" (2.54cm).

ELECTRICAL SYSTEM

- Horizontally-mounted, positive-latch, thermoplastic socket.
- Thermally protected, high power factor electronic ballast (50/60Hz) mounted to the junction box.

LISTING

- Fixtures are UL Listed, non-IC recessed mounting and damp locations.

WARRANTY

- 1-year limited warranty. Complete warranty terms located at: www.acuitybrands.com/CustomerResources/Terms_and_conditions.aspx

ORDERING INFORMATION

EXAMPLE: PDXFI 1/32TRT 6AR CLRFLRVOLT

Series	Lamp/Wattage	Trim color	Baffle type	Voltage	Ballast	Options						
PDXFI	1/18TRT	6AR Clear	CLRFLRV	MVLTV ¹	(blank) Electronic ballast	TRW White painted flange						
	1/26TRT		CLRFR				120	ADEZ ² Advance Mark 10® electronic dimming ballast. Minimum dimming level 5%	WLP With 3500 K lamp (shipped separately)			
	1/32TRT		CLRAR							277	ECOS Lutron EcoSystem® electronic dimming ballast. Minimum dimming level 5%	GMF ² Single, slow-blow fuse
	1/42TRT											

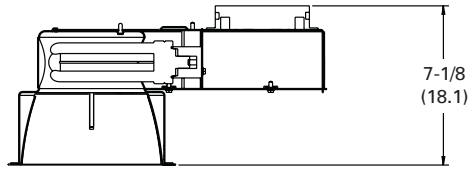
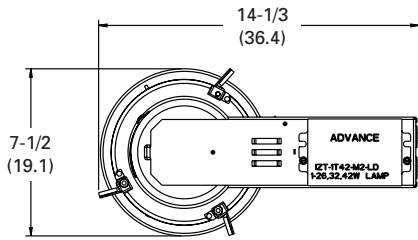
NOTES

ORDERING NOTES

1. Multi-volt electronic ballast capable of operating on any line voltage from 120V through 277V, 50 or 60Hz.
2. Available in 120V or 277V only.

DIMENSIONAL DATA

All dimensions are inches (centimeters) unless otherwise noted.

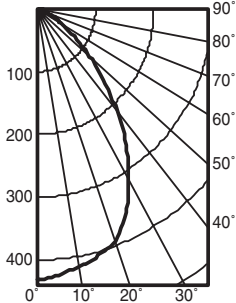


- Aperture: 6-1/4 (15.9)
- Ceiling Opening: 6-7/8 (17.5)
- Overlap Trim: 7-1/2 (19.1)

Distribution Curve Distribution Data Output Data Coefficient of Utilization Illuminance: Single Luminaire 30" Above Floor

PDXFI 1/26TRT 6AR CLRF

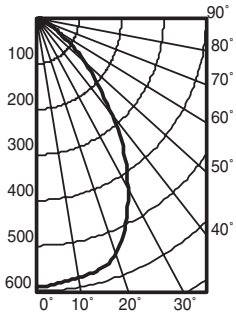
(1) CF26DT/E/IN/835, 1800 lumens per lamp, Test no. LTL11857



From 0°	Ave	Lumens	Zone	Lumens	% Lamp	pf	Coefficient of Utilization						50% beam angle		10% beam angle			
							80%		70%		50%		58.2°		94.7°			
							50%	30%	50%	30%	50%	30%	Mount height	Initial fc at beam center	Beam diameter	fc at beam edge	Beam diameter	fc at beam edge
0	431		0° - 30°	318.8	17.7	1	.44	.42	.43	.42	.41	.40						
5	426	40	0° - 40°	483.9	26.9	2	.40	.37	.39	.37	.37	.36	8	14.2	6.1	7.1	11.9	1.4
15	406	115	0° - 60°	678.3	37.7	3	.36	.33	.35	.33	.34	.32	10	7.7	8.3	3.8	16.3	0.8
25	359	164	0° - 90°	731.3	40.6	4	.32	.30	.32	.29	.31	.29	12	4.8	10.6	2.4	20.6	0.5
35	266	165	90° - 180°	1.3	0.1	5	.30	.27	.29	.26	.28	.26	14	3.3	12.8	1.6	25.0	0.3
45	160	124	0° - 180°	732.6	*40.7	6	.27	.24	.27	.24	.26	.23	16	2.4	15.0	1.2	29.3	0.2
55	77	70				7	.25	.22	.25	.22	.24	.21						
65	32	33				8	.23	.20	.23	.20	.22	.20						
75	14	15				9	.21	.18	.21	.18	.21	.18						
85	5	5				10	.20	.17	.20	.17	.19	.17						
90	2																	

PDXFI 1/32TRT 6AR CLRF

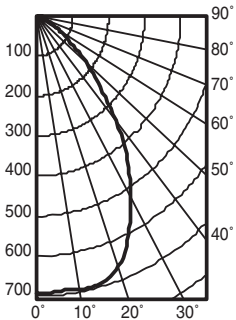
(1) CF32DT/E/IN/835, 2400 lumens per lamp, Test no. LTL11855



From 0°	Ave	Lumens	Zone	Lumens	% Lamp	pf	Coefficient of Utilization						50% beam angle		10% beam angle			
							80%		70%		50%		58.3°		93.4°			
							50%	30%	50%	30%	50%	30%	Mount height	Initial fc at beam center	Beam diameter	fc at beam edge	Beam diameter	fc at beam edge
0	590		0° - 30°	444.1	18.5	1	.44	.43	.43	.42	.42	.41						
5	585	56	0° - 40°	667.0	27.8	2	.40	.38	.39	.37	.38	.36	8	19.5	6.1	9.8	11.7	1.9
15	572	161	0° - 60°	915.5	38.1	3	.36	.34	.36	.33	.34	.32	10	10.5	8.4	5.2	15.9	1.0
25	499	228	0° - 90°	984.3	41.0	4	.33	.30	.32	.30	.31	.29	12	6.5	10.6	3.3	20.2	0.7
35	360	223	90° - 180°	1.6	0.1	5	.30	.27	.30	.27	.29	.26	14	4.5	12.8	2.2	24.4	0.4
45	203	159	0° - 180°	985.9	*41.1	6	.28	.25	.27	.24	.27	.24	16	3.2	15.0	1.6	28.7	0.3
55	98	90				7	.25	.22	.25	.22	.25	.22						
65	42	42				8	.24	.21	.23	.20	.23	.20						
75	18	19				9	.22	.19	.22	.19	.21	.19						
85	6	7				10	.20	.17	.20	.17	.20	.17						
90	3																	

PDXFI 1/42TRT 6AR CLRF

(1) CF42DT/E/IN/835, 3200 lumens per lamp, Test no. LTL11856



From 0°	Ave	Lumens	Zone	Lumens	% Lamp	pf	Coefficient of Utilization						50% beam angle		10% beam angle			
							80%		70%		50%		59.4°		94.1°			
							50%	30%	50%	30%	50%	30%	Mount height	Initial fc at beam center	Beam diameter	fc at beam edge	Beam diameter	fc at beam edge
0	692		0° - 30°	535.8	16.7	1	.40	.39	.39	.38	.38	.37						
5	691	66	0° - 40°	808.2	25.3	2	.36	.34	.36	.34	.34	.33	8	22.9	6.3	11.4	11.8	2.3
15	692	194	0° - 60°	1110.5	34.7	3	.33	.31	.32	.30	.31	.29	10	12.3	8.6	6.2	16.1	1.2
25	604	276	0° - 90°	1193.3	37.3	4	.30	.27	.29	.27	.29	.26	12	7.7	10.8	3.8	20.4	0.8
35	441	272	90° - 180°	1.8	0.1	5	.27	.25	.27	.24	.26	.24	14	5.2	13.1	2.6	24.7	0.5
45	250	195	0° - 180°	1195.1	*37.3	6	.25	.22	.25	.22	.24	.22	16	3.8	15.4	1.9	29.0	0.4
55	117	108				7	.23	.20	.23	.20	.22	.20						
65	50	51				8	.21	.19	.21	.19	.21	.18						
75	22	23				9	.20	.17	.20	.17	.19	.17						
85	7	8				10	.18	.16	.18	.16	.18	.16						
90	3																	

PHOTOMETRY NOTES

- Tested to current IES and NEMA standards under stabilized laboratory conditions.
- Actual performance may differ as a result of end-user environment and application.
- Consult factory or IES file for microgroove baffle, black cone or other photometric reports.