

Gotham Architectural Downlighting
Compact Fluorescent Downlights

4" AFVW
Open Wallwash

Vertical Lamp
Double Twin-Tube or Triple-Tube

FEATURES

OPTICAL SYSTEM

- Self-flanged semi-specular or matte-diffuse reflector with hybrid finish wallwash kicker providing uniform vertical illumination and light high on the wall.
- Patented Vertisys® - Bounding Ray™ Optical Principle design (US Patent No. 5,800,050). Minimum flange matches reflector finish.

MECHANICAL SYSTEM

- 16-gauge galvanized steel construction; maximum 1-5/8" ceiling thickness.
- Telescopic mounting bars maximum of 32" and minimum of 15", preinstalled, 4" vertical adjustment.
- Toolless post-installation adjustments.
- Junction box capacity: 8 (4 in, 4 out) 12AWG rated for 90°C.

ELECTRICAL SYSTEM

- Rugged aluminum lampholder housing.
- Vertically mounted, positive-latch thermoplastic socket.
- Class P, thermally protected, high-power-factor ballast mounted to the junction box.
- SIMPLY5™ technology available.

LISTING

- Fixtures are UL Listed for thru-branch wiring, non-IC recessed mounting, and damp locations. Listed and labeled to comply with Canadian standards.

WARRANTY

- 1-year limited warranty. Complete warranty terms located at www.acuitybrands.com/CustomerResources/Terms_and_conditions.aspx

EXAMPLE: AFVW 26TRT 4AR MVOLT WLP

Series	Wattage/Lamp	Aperture/Trim color	Finish	Lens type	Voltage	Ballast ³
AFVW	13DTT 13TRT 18TRT 26TRT 32TRT	4AR Clear 4PR Pewter 4WTR Wheat 4WR¹ White painted	(blank) Semi-specular LD Matte-diffuse	(blank) No lens CGL Clear glass lens	MVOLT² 120 277 347	(blank) Electronic ballast ECOS^{2,4} Lutron® EcoSystem® electronic dimming ballast. Minimum dimming level 5% ADEZ^{4,5} Advance Mark 10® electronic dimming ballast. Minimum dimming level 5% ADZT² Advance Mark 7® electronic dimming ballast. Minimum dimming level 5%

Options

ELR^{5,6}	Emergency battery pack with remote test switch	RRL⁷	RELOC®-ready luminaire. Provides compatibility with Lithonia RELOC system. Access above ceiling required.
ELRHL^{5,6}	High-lumen-output emergency battery pack with remote test switch	HW	Hardwire for S5 system; replaces RELOC®
GMF⁵	Single, slow-blow fuse	BDP^{8,9}	Ballast disconnect plug
GLR⁵	Single, fast-blow fuse	NEPP	Interface for Sensor Switch® nLight® network with integral power supply. Refer to TN-623-01
TRW	White painted flange (standard on WR)	WL	Wet location; lens required
TRBL	Black painted flange	WRL¹⁰	Wattage restriction label
WLP	3500 K lamp (shipped separately)	TWS	Twist lock socket

ACCESSORIES order as separate catalog numbers (shipped separately)

SCA4 Sloped ceiling adapter. Degree of slope must be specified (10D, 15D, 20D, 25D, 30D). Ex: SCA4 10D.

ORDERING INFORMATION

4" AFVW

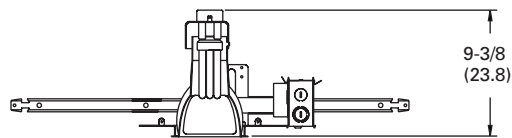
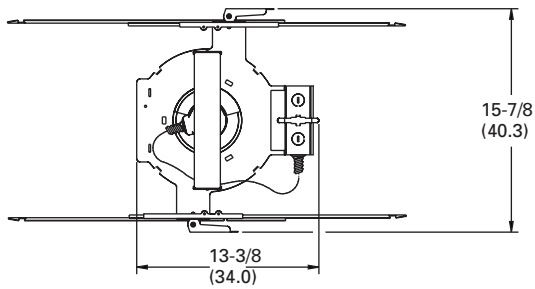
Open Wallwash

Vertical Lamp, Double Twin-Tube or Triple-Tube



DIMENSIONAL DATA

All dimensions are inches (centimeters) unless otherwise noted.



Aperture: 4-5/16 (11)
Ceiling Opening: 5-1/8 (13)
Overlap Trim: 5-7/16 (13.8)

NOTES

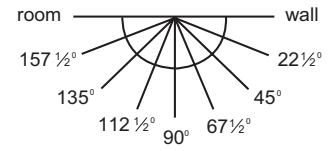
ORDERING NOTES

1. Not available with finishes.
2. Multi-volt electronic ballast capable of operating on any voltage from 120V through 277V, 50 or 60 Hz.
3. For additional ballast types, refer to [TECH-250](#).
4. Not available with 13W.
5. 120V or 277V only.
6. For dimensional changes, refer to [TECH-140](#).
7. For compatible RELOC systems, refer to [TECH-110](#).
8. Not available with EL or ELR option.
9. Meets codes that require in-fixture disconnect.
10. Must specify wattage. Ex.: WRL18



TECHNICAL INFORMATION

Footcandle values are initial and tables are based on minimum of six units. For fixture-to-wall distance other than those shown, use maximum of one-to-one spacing (distance between fixtures not more than distance to wall) for best results.



Fixture/Lamp	Candlepower Data	Footcandle values
--------------	------------------	-------------------

AFVW 18TRT 4AR
F18TBX/SPX35/A/4P
1200 rated lumens
Test no. LTL9962

Vertical angle	Plane angle								
	Room side					Wall side			
	Room	157½°	135°	112½°	90°	67½°	45°	22½°	Wall
0°	303	303	303	303	303	303	303	303	303
5°	336	333	332	322	313	300	285	274	267
15°	344	353	345	328	318	299	285	273	263
25°	283	301	298	278	284	281	276	274	269
35°	208	218	225	214	215	227	234	232	236
45°	81	91	102	113	124	141	158	169	183
55°	5	5	6	6	10	30	75	95	102
65°	2	2	2	2	3	11	37	44	44
75°	1	1	1	1	2	5	16	20	21
85°	0	0	0	0	0	1	3	3	3
90°	0	0	0	0	0	0	0	0	0

	Luminaire 3' from wall on 3' centers			Luminaire 3' from wall on 4' centers		
	1	4	3	4	3	2
2	8	8	8	7	5	7
3	11	10	11	9	7	9
4	10	10	10	7	7	7
5	8	9	9	6	6	7
6	7	7	7	5	5	5
7	5	6	6	4	4	4
8	4	4	4	3	4	3
9	3	3	4	3	3	3
10	3	3	3	2	2	2

PHOTOMETRY NOTES

- Tested to current IES and NEMA standards under stabilized laboratory condition.
- Actual performance may differ as a result of end-user environment and application.
- Consult factory or IES file for microgroove baffle, black cone or other photometric reports.